

## H300V

300 M OBSERVATION CLASS ROV  
FOR SUBSEA OPERATIONS

- MAN PORTABLE, COMPACT, POWERFUL
- 4 HORIZONTAL VECTORED THRUSTERS
- HIGH PERFORMANCE VIEWING SYSTEM
- MODULAR DESIGN, OPTIONS SIMPLE TO ADD
- EASY ACCESS FOR MAINTENANCE



# Discover H300V skid-based modular architecture

Configure according to your needs

## BASIC SYSTEM



USBL positioning system

Obstacle avoidance sonar

Vectored DC thrusters

Electronic Pod

Monochrome high sensitivity TV camera

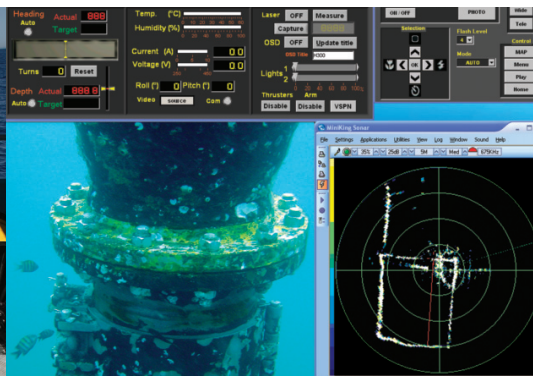
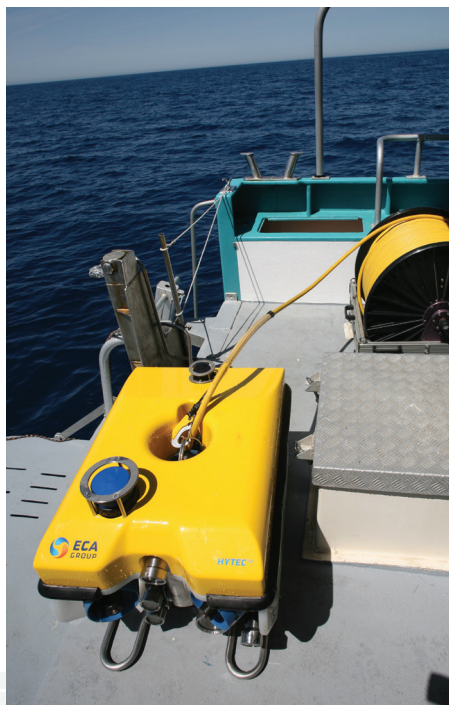
Pan & Tilt unit

2 fixed LED lights

Zoom colour camera mounted, with 2 LED lights, on a P/T unit

**ADDITIONAL SKID**  
5E-MICRO 5-function electric manipulator arms

## EXAMPLE OF CONFIGURATION WITH ADDITIONAL SKID





## FOR SPECIFIC MISSIONS, CUSTOMIZE YOUR H300V WITH ADDITIONAL EQUIPMENTS:

- HD or Full HD TV camera
- High resolution digital stills camera + flash unit
- Rear viewing low light B/W camera
- Sonars:
  - Navigation – Imaging – Side scan
- Acoustic positioning system
- Altimeter echo sounder, with auto-altitude function
- NDT sensors
- Electric manipulator arms



### H300V-INS

#### SUBSEA OBSERVATION, INSPECTION & SURVEILLANCE

ROV highly equipped in viewing systems and sonars:

- HD TV camera
- Digital still camera
- Imaging sonar



### H300V-PS

#### PIPE AND CABLE SURVEY

- HD TV cameras
- Rear TV camera
- Digital still camera
- Side scan sonar
- USBL positioning system



### H300V-OR / H300V-W

#### OBJECT RECOVERY, WRECK INSPECTION

- Single or dual electric manipulator arm for object recovery
- 3D HD TV cameras
- Rear TV camera
- Digital still camera
- USBL positioning system
- Sediment sampler



### H300V-SUR

#### SEABED SURVEY

- Viewing systems and sonars
- Altimeter and auto-altitude function
- Side scan sonar

### H300V-CT

#### CABLE & PIPE TRACKING

- Pipe tracking and location system
- Altimeter and auto-altitude function
- USBL positioning

### H300V-CBRN

#### CBRN MEASUREMENT

- CBRN measurement (chemical, biological, radiological and nuclear)



## H300V

300 M OBSERVATION CLASS ROV  
FOR SUBSEA OPERATIONS

### VEHICLE

#### PERFORMANCES

- Movements: in three axis, plus rotation on its own axis
- Forward speed: 3.5 knots (in 0 knot current)
- Operating depth: 300 m in sea water
- Lifting capacity: up to 10 kg with 5 functions arm
- Payload: 8 kg with removal of whole ballast – up to 15 kg with additional buoyancy

#### GENERAL CHARACTERISTICS

- Dimensions (mm): 840 L x 530 H x 600 W
- Weight in air: 70 kg excluding optional equipment
- Material: polypropylene frame, SS fittings

#### PROPULSION

- Horizontal: 4 vectored thrusters
- Vertical: 1 thruster

#### TELEMETRY UNIT

- Communication through RS485 data unit
- Advanced power management system
- Extra data link for sonar and NDT

#### VIEWING & SONAR SYSTEM

##### Inspection TV camera on P&T unit

- 10x zoom colour TV camera and two LED lights mounted on Pan & Tilt unit (Pan 140°; tilt 120°)
- Laser beams for 2D measurement

#### Navigation TV camera

- Low light B/W on top of vehicle
- Sensitivity:  $3.10^{-4}$  lux

#### Headlights

- Two fixed LED lights (4000 lm), variable intensity

#### Scanning / Navigation sonar

- Any type, any brand

#### SENSORS

##### Heading

- 3 axis magnetometer sensor
- Precision +/- 1% Auto heading function

##### Depth

- Piezoresistive type sensor - Precision: 0.1% full scale - Auto depth function

##### Other sensors

- Inside temperature - Water ingress - Amperage feedback

#### OPTIONAL EQUIPMENT

- HD, FHD, 4K or 3D colour TV camera, rear B/W TV camera
- High resolution digital still camera with flash gun
- Obstacle avoidance and Imaging sonar
- Altimeter (with auto altitude function)
- Fiber Optical Gyrocompass
- USBL or LBL positioning system
- Xenon strobe and acoustic pinger recovery unit

#### OPTIONAL SKIDS

- 5-function full electric or hydraulic manipulator arm - Side scan sonar - Metal Detector - NDT skid - Leak detection - 3D sonar - Sediment sampler

### SURFACE CONTROL

#### CONTROL UNIT

Incorporates a PC and a digital recorder. Racked (19") in a shockproof case with removable front and rear covers; IP 52

- PC with 17" TFT LCD screen
- Camera parameters: video gain, electric shutter, white balance
- Auto heading and auto depth
- Recording of videos and photos on hard disk
- Self-diagnosis of whole system
- Control of lights (on/off, intensity)
- Selection of video signal from camera (inspection/navigation/still)
- Display on the screen of TV image, navigation parameters, amps & voltage, fault indicators.
- Dimensions (mm): 524 W x 499 H x 360 D
- Weight: 42 kg
- Hand box controller: joysticks for ROV movements, P/T unit and manipulator arm controls

#### OPERATING CONDITIONS

- Operating temperature: 0° to + 50°C
- Storage temperature: -10° to +60°C
- Humidity: 90%
- Power supply required: 230V AC ; 4 KVA

#### UMBILICAL CABLE

- Length and OD: 400 m x 19.5 mm
- Optional: 1200 m x 21 mm with fiber optic for data and video
- Buoyancy: Positively buoyant in water
- Connector: Subconn type

#### WINCH

TMO 450: manual winch with 400 m umbilical cable capacity



[www.ecagroup.com](http://www.ecagroup.com)

#### ASIA - PACIFIC

ECA GROUP ASIA  
33 Ubi Avenue 3 - Vertex #02-31/32  
Singapore 408868  
Phone: +65 6636 5459  
E-mail: [eca-asia@ecagroup.com](mailto:eca-asia@ecagroup.com)

#### FRANCE

ECA ROBOTICS  
501 rue de la Croix de Lavit - BP 4403  
34197 Montpellier Cedex 5 - France  
Phone: +33 4 67 63 64 00 - Fax: +33 4 67 52 14 88  
E-mail: [eca-hytec@ecagroup.com](mailto:eca-hytec@ecagroup.com)

#### OTHER COUNTRIES

ECA RSM  
Z.I. Toulon Est - 262, rue des frères Lumière  
83130 La Garde - France  
Phone: +33 4 94 08 90 00 - Fax: +33 4 94 08 90 70  
E-mail: [eca-rsm@ecagroup.com](mailto:eca-rsm@ecagroup.com)